



Farm Credit
Services
of America

2022 COMMUNITY IMPACT REPORT



MISSION-DRIVEN, COMMUNITY-FOCUSED

As a mission-driven financial cooperative, our commitment to serving rural America goes beyond financing those who farm and ranch. We make a difference in the rural communities where we live and work through volunteering, local contributions, grants and more.

We put our time and resources where they have a direct impact on agriculture and our communities – agricultural education and young and beginning producer programs, hunger and nutrition and rural disaster relief and essential services. Our work in 2022 expanded our efforts to promote hands-on learning experiences, reduce food insecurity, and provide scholarships and educational resources to students.

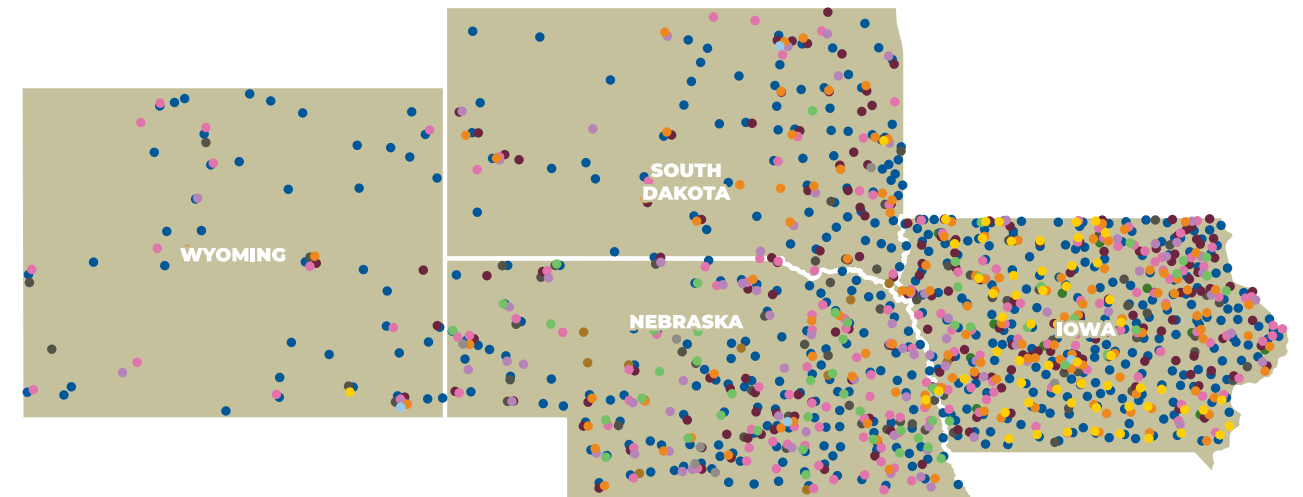
In support of this focus, our employees dedicated more than 10,700 hours to community service work. Farm Credit Services of America (FCSAmerica) also contributed more than \$5.6 million to projects and programs that impact agriculture, including over \$1.1 million through our Working Here Fund grant program.

The impact map in this report illustrates our local commitment to the individual projects, programs and organizations supported in 2022. We also share inspiring success stories made possible by our community partners and our generous employees.

Along with our Board of Directors, I am truly proud of FCSAmerica's ongoing commitment to building strong communities across our four-state territory.



Mark Jensen
President and CEO



- **4-H Stall Cards:** More than 55,300 stall cards provided to livestock exhibitors.
- **Disaster Relief:** Contributions supported local disaster relief efforts.
- **Employee Match:** This program provided matches of up to \$300 for each employee and Director contribution to causes that were meaningful to them, totaling over \$180,400.
- **Employee Volunteers:** FCSAmerica employees volunteered more than 10,700 hours for nonprofit organizations in their local communities through virtual and in-person volunteer efforts.
- **Expanded Grants:** Up to \$10,000 per grant, totaling \$703,950 for hunger and nutrition, ag education, rural disaster relief and essential services, and young and beginning producer programs.
- **FFA Support:** Provided funding for FFA programs and projects such as establishing new chapters and other FFA needs.
- **Grants:** Provided 224 Working Here Fund grants up to \$2,000 each, totaling \$416,900 for hunger and nutrition, ag education, rural disaster relief and essential services, and young and beginning producer programs.
- **Hunger Relief:** Provided funding for mobile pantries, food rescue and food distribution to underserved counties with high percentages of food insecurity.
- **Local Contributions:** Each of our local offices impact communities with funding support for local programs and initiatives.
- **Scholarships:** Awarded 32 \$2,500 land grant university scholarships, 42 \$2,000 community college scholarships, 90 four-year college \$2,500 scholarships and 25 FFA \$2,000 scholarships to students pursuing a career in agriculture.
- **Key Partnerships:** Funded support for South Dakota State University, Iowa State Foundation Ag Biz Endowment, University of Wyoming Ranch Management, Food Bank of Iowa, Food Bank for the Heartland, Whispering Roots and other impactful programs.
- **Women in Ag:** Supported women in ag programs, including farm business management, livestock management and succession planning and women in ag leadership.



Scan the QR code for more featured stories about the projects, programs and organizations supported in 2022, or visit [FCSAmerica.com/community](https://www.fcsamerica.com/community).

CUTTING EDGE TECHNOLOGY

Reimagining Aquaponic Solutions

The Student Innovation Center at Iowa State University (ISU) encourages and supports experimentation, collaboration and an exchange of ideas – all in the name of making the world a better place.

Student entrepreneurs are already making a difference. Isaac Bradford, a junior in agricultural engineering, is the founder of Filtraponics, a startup that turns freshwater aquariums into educational aquaponics systems.

“Filtraponics teaches students of all ages sustainability by utilizing fish and plants to demonstrate the nitrogen cycle, food webs and more with hands-on educational aquaponics,” says Bradford. “We are working on creating a customizable product that serves as a better solution to current options in smaller household and educational aquaponics.”

For Bradford, the project has been a longtime endeavor that sprouted from an interest in inventing at an early age and grew into a business focused on educating students about sustainability.

Projects like Bradford’s were made possible by a FCSAmerica donation to the Innovation Center. FCSAmerica’s contribution helps promote experiential learning and showcases disciplines and career pathways available in agriculture and life sciences.

“Our goal is to educate youth about aquaponics and ecology to enable them to sustain the world for future generations.”

Isaac Bradford
Junior in agricultural engineering, ISU



AG SUPPORTING AG

Resources for First Responders

Up-to-date emergency equipment is critical to safeguarding first responders so they can focus on patients. Volunteer fire departments were able to upgrade their equipment to better serve their communities with funding from FCSAmerica.

The following frontline equipment funded by FCSAmerica will help to ensure first responders can perform their duties safely and efficiently:

- ▶ Powered ambulance cot
- ▶ Automated external defibrillators
- ▶ Extraction equipment
- ▶ Portable fire pumps
- ▶ Handheld radios
- ▶ Bunker gear
- ▶ Personal protective equipment
- ▶ Farm rescue tools

Responding to Natural Disaster Events

When farmers, ranchers and residents were impacted by a series of wildfires that spread across Nebraska and an early spring tornado outbreak in Iowa, FCSAmerica stepped up to support the impacted communities.

\$25,000 donated to disaster relief efforts for fires and tornado relief.



BREAKING THE HUNGER CYCLE

Initiating Positive Change in Nutrition

Cent\$ible Nutrition, a cooking and nutrition program in Wyoming, is helping individuals and families make the most of the food provided through food pantries.

Program educators and food pantry directors noted that dry beans and lentils distributed through pantries or The Emergency Food Assistance Program (TEFAP) often go unused.

“Dry beans and lentils are the number one returned food item to our food bank,” says Julie Buckley director of the Thayne Community Food Bank. “Approximately 85-90 percent of the food returned to our food bank are dry legumes because people don’t have the means or knowledge of how to cook and use them.”

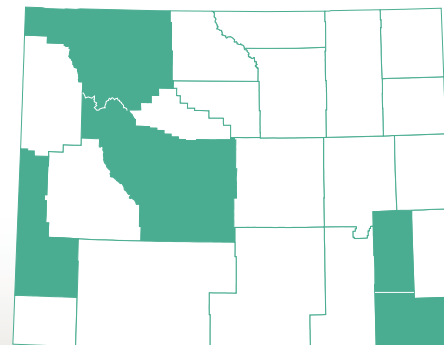
In response, Cent\$ible Nutrition is offering a series of classes to learn how to cook legumes and whole grains quickly. Each participant will receive a pressure cooker to use at home.

“By partnering with our local food pantries across Wyoming, we can provide a multipurpose cooking tool to families to promote the consumption of low-cost but nutrient-dense foods that are readily available to Wyoming residents.”

Kelsi Goldfarb
Cent\$ible Nutrition Program Educator

2022 Communities Impacted:

- ▶ **Fremont Co.**
- ▶ **Laramie Co.**
- ▶ **Lincoln Co.**
- ▶ **Platte Co.**
- ▶ **Park Co.**



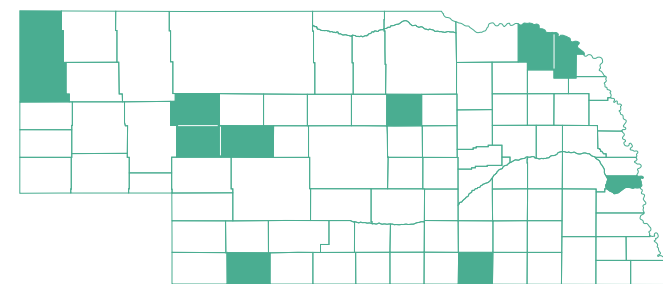
Heartland Hope Mission: More than a Food Pantry

More than 200,000 Nebraskans worry about where their next meal is coming from. Heartland Hope Mission is partnering with FCSAmerica to buy a refrigerated food truck to better reach families in under-sourced areas, make deliveries to the elderly and respond to crises situations.

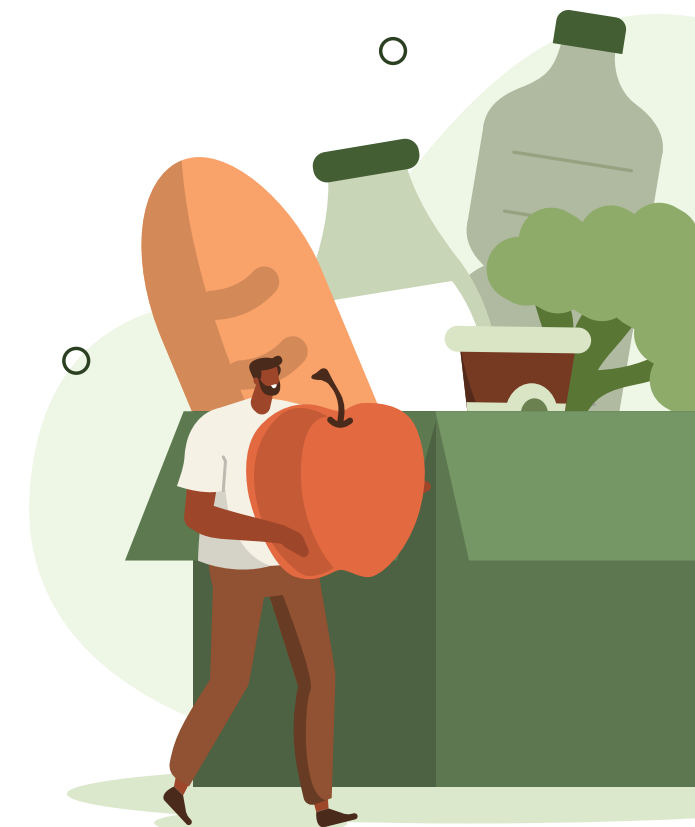
The truck will provide safe transport of nutrient-dense foods, such as dairy and meat. Additionally, Heartland Hope Mission’s outreach team will be able to travel farther, reaching more communities struggling with food insecurity.

FCSAmerica Mobile Pantry Locations 2022-23:

- ▶ **Nuckolls Co.**
- ▶ **Harrison Co. (IA)**
- ▶ **Hitchcock Co.**
- ▶ **Arthur Co.**
- ▶ **Grant Co.**
- ▶ **McPherson Co.**
- ▶ **Sarpy Co.**
- ▶ **Garfield Co.**
- ▶ **Cedar Co.**
- ▶ **Dixon Co.**



Mobile pantries coordinated in partnership with Food Bank for the Heartland.



HANDS-ON LEARNING

FCSAmerica is proud to support hands-on learning projects that contribute to sustainability in the agriculture industry.

Benefits of Beekeeping

A beekeeping operation managed by Central Lyon FFA students has gained increased support from community members after a successful honey harvest. Funding for personal protective equipment, curriculum development and beekeeping supplies will help the project expand to meet demand and interest from local supporters.

“We’re incorporating beekeeping into our community. The new curriculum and equipment will allow us to bring other students out to the colonies to show them the operation.”

Josh Rockhill
Central Lyon Agriculture Instructor/FFA Advisor



Hands-On Horticulture

Gardens and greenhouses are excellent tools to teach youth about where their food comes from, provide instruction on gardening and plant production, and find ways to give back to local communities. In 2022, FCSAmerica supported horticulture projects for youth of all ages, from toddlers to high schoolers.

- Red Oak Child Development Center Garden
- Riverside Preschool Garden
- Tri-County Schools Greenhouse
- Turkey Valley FFA Greenhouse
- Sidney Public Schools Greenhouse
- Shenandoah Community Schools Greenhouse
- Coon Rapids-Bayard CSD Greenhouse

Promoting Pollinator Habitats

Students at Iowa Lakes Community College are gaining environmental learning experiences through the development of a pollinator habitat covering 1.5 acres with a diverse mix of plants, grasses, shrubs and trees.

Program Goals:

- ▶ Utilize pollination habitat as a learning lab for community education, science and agriculture education.
- ▶ Create an interactive app using Geographical Information Systems (GIS).
- ▶ Attract pollinators and birds that are vital to conservation efforts.
- ▶ Improve air quality and reduce environmental damage and health risks.
- ▶ Donate fruits and berries grown to local food shelters.

AG EDUCATION

Ag Education in Action

FCSAmerica supports 4-H and FFA programs to provide education, experiences and resources for those starting in agriculture. This year, FCSAmerica grants helped fund two start-up FFA programs – Central Springs FFA (IA) and Langford FFA (SD) chapters – as well as special FFA initiatives across FCSAmerica’s four-state territory.

All in for Ag Education

All in for Ag Education is a collaborative effort to increase awareness and access to agricultural education in the state of Iowa. The initiative is one step closer to achieving its goal of ensuring all students at Iowa secondary schools and community colleges have access to ag education programming.



South Dakota FFA Chapters Receive Gift of Blue

There is no stronger symbol of the FFA organization than the iconic blue corduroy FFA jacket. However, FFA members come from a variety of socioeconomic backgrounds, and many of them cannot finance an FFA jacket. As a Distinguished Star Partner of the South Dakota FFA Foundation, FCSAmerica provided funding for FFA chapters to receive FFA jackets for their members.

Wyoming FFA Members Grow Leadership and Advocacy Skills

More than 2,500 students and 65 teachers were positively impacted in 2022. In addition to sponsoring the fall student leadership conferences, the first round of Supervised Agriculture Experience (SAE) funds were distributed in Wyoming. SAE funding allows students to expand or start projects or pursue other experiences in agriculture.

Investing in Student Educational Development

The Nebraska FFA Foundation is helping fulfill the mission of financially supporting agricultural education students, teachers and programs. Funds were allocated to the Chapter Officer Leadership Training and Edge Leadership conferences. Thirty-four Nebraska FFA chapters or FFA members were also awarded funds through the Nebraska FFA Foundation grant program.



SCHOLARSHIPS

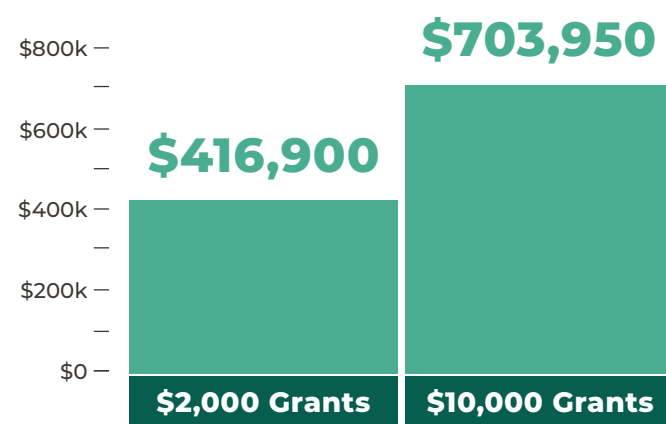
189 recipients

\$439,000 awarded

Land grant universities
4-year colleges
Community colleges
FFA students

GRANTS

310 grants totaling \$1,120,850



EMPLOYEES GIVE BACK

2022 brought FCSAmerica teammates into the community through individual and group volunteer efforts.



Nonprofit Donations by FCSAmerica

Below are some of the nonprofit organizations FCSAmerica provided donations to in 2022. For a more comprehensive list of more than 1,300 nonprofit organizations, visit www.fcsamerica.com/communitydonations.

Ag Education

Allamakee County Extension
Annie's Project
Bellevue University
Big Horn County Extension
Buchanan County Soil Extension
Buena Vista University
Carroll County Extension
Casper College
Central Community College Foundation
Central Wyoming College
Clayton County Extension
Crook County Extension
Delaware County Extension
Des Moines Area Community College
Doane University
Dordt University
Dubuque County Extension
Eastern Wyoming College
Fayette County Extension
Greene County Extension
Hastings College Foundation
Hawkeye Community College Foundation
Henry County Extension
Howard County Extension
Iowa Central Community College
Iowa Lakes Community College
Iowa State University
Iowa Western Community College
Jackson County Extension
Kirkwood Community College Foundation
Lake Area Technical College
Laramie County Community College
McCook County Extension
Mitchell Technical College
Montgomery County Extension
Muscatine County Extension
Nebraska College of Technical Agriculture
North Central Iowa Ag In The Classroom
North Iowa Area Community College
Northeast Community College Foundation
Northwest College
Sheridan College
Siouxland Ag In The Classroom
South Dakota State University Foundation
Southeast Community College
Spink County Extension
Tama County Agricultural Extension
University of Nebraska Foundation
University of Nebraska-Omaha
University of Northern Iowa
University of South Dakota Foundation
University of Wyoming
Washington County Extension
Winneshiek County Extension
Worth County Extension
Wyoming Agriculture In The Classroom
Yankton County Extension

Agriculture Organizations

Adams County Cattlemen
Boone County Pork Producers
Buchanan County Cattlemen
Buchanan County Dairy Producer
Buena Vista County Soil and Water Conservation
Carroll County Cattlemen
Cerro Gordo County Cattlemen
Clayton County Dairy Promotion
Delaware County Dairy Promoter
Dubuque County Cattlemen
Fayette County Corn Growers
Fredericksburg Dairy Days
Gage County Ag Society

Agriculture Organizations

(continued)
Greene County Cattlemen
Guthrie County Corn Growers
Hancock County Ag Society
Harrison County Soil & Water Conservation
Iowa Cattlemen's Association
Iowa Dairy Expo
Iowa Soybean Association
Johnson County Cattlemen
Lyon County Pork Producers
National Pork Producers Council
Nebraska Cattlemen
Nebraska Corn Growers
Nebraska Sheep & Goat Producers Association
Nebraska Soybean Association
Northeast Iowa Dairy
O'Brien County Cattlemen
Phelps County Ag Society
Saline County Ag Society
Shelby County Cattlemen
South Dakota Beef Breeds Council
Suhr Dairy And Friends Annual Farm Tours
Tama County Pork Producers
Winneshiek County Dairy Promotion
Women Food And Agriculture Network
Woodbury County Cattlemen

Disaster Relief and Essential Services

Albert City Fire Department
Bradley Fire Department
Bushnell Volunteer Fire Department
Fairfax Fire Department
Le Mars Fire Department
Madison County Disaster Recovery

Employee Match Donations

Allamakee County Agricultural Association
Alzheimer's Association
American Heart Association
American Library Association
American Red Cross of North and Western Iowa
Black Hills Works Foundation
Boys & Girls Clubs of Central Southwest Iowa
Chiari & Syringomyelia Foundation
Children's Hospital & Medical Center
Children's Miracle Network
Children's Museum Of Siouxland
Cowboy Joe Club
Creighton University
Cystic Fibrosis Foundation
Down Syndrome Alliance of the Midlands
Glory House Of Sioux Falls
Hamilton County Fair
Harrisburg Community Foundation
Hope Center
Intercultural Senior Center
Iowa Special Olympics
Jason's Friends Foundation
JDRF International
Meals On Wheels America
Mitchell United Way
Nebraska Humane Society
Open Door Mission
Pet Rescue League
Siena Francis House
South Dakota Community Foundation
The Life House
United Way Of East Central Iowa
United Way of Northeastern South Dakota
Wings Of Refuge
Wyoming Agricultural Leadership Council

Hunger and Nutrition

Allamakee County Food Shelf
Crawford County Hunger Fighters
Feeding South Dakota
Food Bank For The Heartland
Food Bank of Iowa
Food Bank of Lincoln
Kids Against Hunger-Sioux Falls
Kossuth County Food Pantry
Miner County Food Bank
Northeast Iowa Food Bank
Northern Turner County Food Pantry
Saving Grace Perishable Food Rescue
Watertown Area People Against Child Hunger
Wood River Food Pantry
Woodbine Food Pantry
Wyoming Food Bank Of The Rockies
Wyoming Hunger Initiative

Volunteer Match Donations

Abide Network
Alliance Bulldog Backpack Program
American Foundation For Suicide Prevention
American National Red Cross
Big Brothers Big Sisters Lincoln
Chicano Awareness Center
Dakota County Agricultural Society
Freedom Foods
Habitat For Humanity International
Heart Ministry Center
Heartland Hope Mission
Helping Services For Youth & Families
Johnson County Ag
Johnson County Fair
Mentor Nebraska
Mercy Meals
Nebraska Adaptive Sports
No More Empty Pots
Project Pink'd
Project Porchlight
Quality Life
Ronald McDonald House Charities In Omaha
Safe Harbor
South Dakota State Fair Foundation
Special Olympics South Dakota
The Arc of Norfolk
The Salvation Army
Urban League of Nebraska
Whispering Roots
Wreaths Across America

Young and Beginning Producer Programs

Alma FFA
Arlington FFA
Arthur County 4-H Council
Butte/Lawrence County 4-H
Central Lyon FFA
Cheyenne Frontier FFA
Iowa 4-H
Iowa FFA Foundation
National FFA Foundation
Natrona FFA
Nebraska 4-H Foundation
Nebraska FFA Foundation
South Dakota FFA
Seward County 4-H Foundation
South Dakota 4-H
St. Paul FFA
Waverly FFA Alumni Association
Woodbury County 4-H
Wyoming FFA
Wyoming 4-H



Agriculture Works Here.® / 800-884-FARM / fcsamerica.com

Agriculture Works Here is the property of Farm Credit Services of America.



AM23-IMPACTRPT